



Our Mission

Connecticut Stage Company is dedicated to producing quality theatrical performances with and for our community. We strive to inspire, educate, and entertain.

CSC is an artistic haven for creators, storytellers, and supporters of the arts.

Connecticut Stage Company is a 501(c)3 and we rely on your generosity to continue to provide programming!

Donations are tax deductible.

DONATE HERE



Your support is greatly appreciated!

Follow us on social media!
@ctstageco

WWW.CONNECTICUTSTAGECOMPANY.ORG



IN PARTNERSHIP WITH NEW CANAAN LIBRARY

HAIR

NOVEMBER 23 & 24, 2024

NEW CANAAN LIBRARY

BOOK & LYRICS Gerome Ragni & James Rado
MUSIC Galt MacDermot

Produced for the Broadway stage by Michael Butler
Originally Produced by the New York Shakespeare Festival Theatre

WWW.CONNECTICUTSTAGECOMPANY.ORG

Your talent shines brighter than the Age of Aquarius!
Congratulations to the cast & crew of Hair!



1 of 1

Live Unique

Preston Stamm
Global Real Estate Advisor
203.609.3133
pstamm@williampitt.com

New Canaan Brokerage
26 Cherry Street | New Canaan, CT 06840
williampitt.com



Each Office is Independently Owned and Operated. 🏠

Rosie
TASTE THE LOVE
27 ELM STREET

CPP | COVE
POINT
PROPERTIES

ROBERTA ANN
INTERIORS



Roberta has been creating warm and inviting spaces throughout Fairfield, New Haven and Hartford Counties for over 15 years. Her sense of style for transitional, modern and traditional designs has helped her clients to achieve the look that reflects their own personal style.

WWW.ROBERTAANNINTERIORS.COM



We are proud to support the
CONNECTICUT STAGE COMPANY
and the current production of



Monday – Friday | 7:30am – 7:30pm
Saturday | 7:30am – 7pm
Sunday | 8am – 6pm

229 Elm Street, New Canaan
(203) 966-4848
stewartsmarket.com

Connecticut Stage Company presents

HAIR

The Broadway Musical in Concert

BOOK & LYRICS
Gerome Ragni & James Rado

MUSIC
Galt MacDermot

Produced for the Broadway stage by Michael Butler
Originally Produced by the New York Shakespeare Festival Theatre

STARRING

KEVIN CLAY* JAY ROBERTS-MILLER* ASHLEY LALONDE*
MARIAH LYTTLE* SARAH KELLY* ZION MIDDLETON
MADELINE WONG PEREZ KAIMANA NEIL CHRIS NICOLOSI
BERLIN LEE CHARLES HANNAH ELLOWITZ MARGOT GROM
JANAYSIA GETHERS NOAH HARTWELL LERON WELLINGTON

DIRECTION BY
KATE SIMONE

EXECUTIVE PRODUCER
LORAH HASKINS

MUSIC DIRECTION BY
ARI GOLDBLOOM-HELZNER

CHOREOGRAPHY BY
CASSIE AUSTIN

PRODUCTION STAGE MANAGER
JORDAN E MOORE*

CREATIVE ASSOCIATE
SADIE SEELERT

*denotes a member of Actors' Equity Association

HAIR is presented by arrangement with Concord Theatricals on behalf of Tams-Witmark LLC.

www.concordtheatricals.com

The videotaping or making of electronic or other radio and/or visual recordings of this production and distributing recordings or streams in any medium, including the internet, is strictly prohibited, a violation of the author(s)'s rights and actionable under the United States copyright law. For more information, please visit:

<https://concordtheatricals.com/resources/protecting-artists>

A NOTE FROM CSC CO-FOUNDERS LORAH HASKINS & KATE SIMONE

Welcome to the BE-IN! We're so glad you are here to join us in celebrating life! When choosing a show to kick off our second season, we knew we wanted to bring our community together through the power of beautiful music and an impactful story, and found exactly that in HAIR. We find its message so powerful in these times where so many are fighting to be who they are and differences are misconstrued as subversive, this message is eternal: we are stronger because of our differences. We are so grateful to this incredible cast who've gathered together with such an indomitable spirit, infectious joy, and beyond believable talent. We cannot wait for you all to share in this with us!

We wouldn't be here today without the support of our community; our board: Lindsey Daly, Jessica Finck, Stacy Murphy, and Whitney Ruth; our sponsors: Cove Point Properties, The Waverly Group, and Karl Chevrolet; New Canaan Library; and of course all of YOU! We know the arts will endure challenging times, but it takes a supportive community. We thank you for supporting these artists and keeping this beautiful music alive! We hope you can join us again, April 5 & 6 for Spelling Bee!

GET INVOLVED!
EMAIL CTSTAGECO@GMAIL.COM

HAIR WAS MADE POSSIBLE BY OUR SPONSORS

**KARL
CHEVROLET**

New Canaan, CT



niche
STUDIO

Niche by Nathalie Schubert
Custom-designed furniture & drapery
nichebyns.com

Opening in Darien
Spring 2025

The app you have been waiting for.

CircleRanks

Watch the movies and shows your friends love.



Available on the App Store and Google Play

HOYT'S HERE®
(203) 966-LIMO (5466)

Hoyt Livery

30+ YEARS OF SERVICE



From Business to Pleasure and
Your Special Events Book Easily with
Hoyt Livery's Ground Transportation

**FAMILY-FRIENDLY SEDANS,
LUXURY VANS AND STYLISH SUVS**

Find out why people are saying
"Hoyt's Here!"

(800) 342-0343 | www.HOYTLIVERY.com

CAST

Claude.....KEVIN CLAY*
Berger.....JAY ROBERTS-MILLER*
Sheila.....ASHLEY LALONDE*
Dionne.....MARIAH LYTTLE*
Jeanie.....SARAH KELLY*
Hud.....ZION MIDDLETON
Crissy.....MADELINE WONG PEREZ
Woof.....KAIMANA NEIL
Margaret Mead.....CHRIS NICOLOSI
Tribe.....BERLIN LEE CHARLES, HANNAH ELLOWITZ,
MARGOT GROM, JANAYSIA GETHERS,
NOAH HARTWELL, LERON WELLINGTON
Hubert.....ANDY SAULITIS (Saturday)
MATT BLANK (Sunday)

*denotes a member of Actors' Equity Association

HAIR takes place in New York City in 1967

There will be one 10-minute intermission

Applied Behavior Analysis
Behavior Therapy
Psychotherapy
Psychological Assessments
Neuropsychological Assessments
Occupational Therapy
Physical Therapy
Speech and Language Therapy
PROMPT Therapy
Educational Evaluations
School Consultation
School Shadowing
Sensory Integration



**Collaborative Pediatric Assessment
and Therapies**

1445 East Putnam Avenue 203.622.8600
Old Greenwich, CT 06870 info@waverly-group.com

We are a team committed to developing a road map for your child and building bridges along the way so that families, schools and practitioners are all working together to generate practical solutions to help your child thrive

Executive Functioning
Coaching
Tutoring
Early Detection Autism Spectrum Disorders
Early Intervention
Picky Eating
Nutritional Consultation
Parent Training
For scheduling new appointments or for questions please email info@waverly-group.com or call us at 203.622.8600



UNFORGETTABLE EVENTS
A Lifetime of Memories

SHELBY GREY
EVENTS

WWW.SHELBYGREYEVENTS.COM



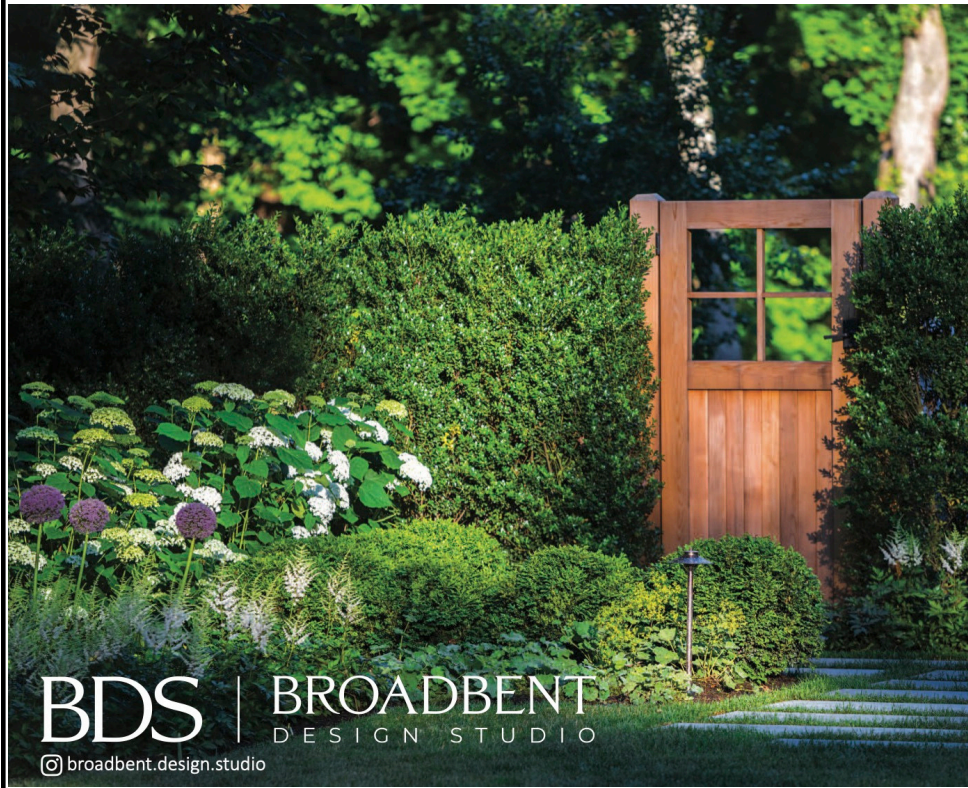
PRODUCTION STAFF

Executive Producer.....LORAH HASKINS
Director.....KATE SIMONE
Music Director.....ARI GOLDBLOOM-HELZNER
Choreographer.....CASSIE AUSTIN
Production Stage Manager.....JORDAN E. MOORE*
Creative Associate.....SADIE SEELERT
Costumes & Props.....LORAH HASKINS

CONNECTICUT STAGE COMPANY BOARD OF DIRECTORS

Lindsey Daly
Jessica Finck
Lorah Haskins

Stacy Murphy
Whitney Ruth
Kate Simone



THE STUDIO

FOR PERFORMING ARTS

NEW CANAAN, CT

SINGING . ACTING . PIANO . DANCE . MUSICAL THEATRE

PRIVATE LESSONS . GROUP CLASSES . SUMMER CAMPS

www.TheStudioPerformingArts.com



Congratulations to CT Stage Company on a fabulous show!
With love, Team Empire Waist



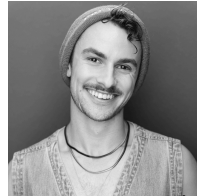
Watch Now on Digital and On-Demand
www.empirewaistfilm.com



Kelly Gabrielle Murphy (Meg), Cara Rose DiPietro (Amy),
Kate Baldwin (Marmee), Kennedy Caughell (Jo),
Sarah Kelly (Beth) in CSC's Little Women



Kevin Clay* (Claude) has been so fortunate to play Elder Price on the North American Tour, as a founding member of the UK/European Tour, and currently in the Broadway company. Other credits include Pittsburgh Civic Light Opera (Gypsy, The Wedding Singer), Music Theatre Wichita (West Side Story, Catch Me If You Can, Joseph... Dreamcoat, 42nd Street), and Wagon Wheel Theatre (Shrek, 9 to 5, Forever Plaid). A proud graduate of Penn State University with a BFA in Musical Theatre. Huge thanks to his family, friends, Hudson Artists Agency.



Jay Roberts-Miller* (Berger) is so excited to make their Connecticut Stage debut! National Tours: Tina: The Tina Turner Musical (Swing, Co-Dance Captain), A Bronx Tale (Handsome Nick, u/s Calogero-Networks). Off-Broadway: From Here to Eternity, (Anderson, Baryshnikov Arts Center). Regional: Trading Places (Swing--Alliance Theater), Spamalot (Ensemble-Ogunquit Playhouse), Kiss Me, Kate (Gremio, u/s Bill-Arts Center of Coastal Carolina), A Christmas Carol (Ensemble--Zach Scott Theatre), Footloose, South Pacific, Mamma Mia (Ensemble-The Rev), Secret Garden (Dickon-New London Barn Playhouse). Social: @jacobtwoastnames. Many thanks to their incredibly kind friends and family, and the folks at the Daniel Hoff Agency.



Ashley LaLonde* (Sheila) is a professional actor, singer, and dancer based in New York City. She was recently seen in the hit Broadway musical Hamilton, where she covered all three Schuyler Sisters (Eliza, Angelica, and Peggy/Maria) on the national tour. Ashley has appeared in several world premiere musicals and plays, including The Black Clown (Lincoln Center), Blood Work (National Black Theatre), Burn All Night (A.R.T.), and Punk Rock Girl (Argyle Theatre). Other favorite credits include Natalie in Next To Normal (Westport Country Playhouse) and Dawn in When We Get There (York Theatre). She's performed at Carnegie Hall, Lincoln Center, Sony Hall, 54 Below, and more, recently debuting her hit solo show at the Green Room 42. Ashley's making her TV debut in an upcoming highly-anticipated Netflix series. She made history as the first ever Black woman to star in the Hasty Pudding Show at Harvard, graduating early with a bachelor's in Sociology, a minor in Theater, a certificate in Spanish, and an award for Artistic Excellence in Musical Theater. @ashleylala & ashley-lalonde.com



Mariah Lyttle* (Dionne) is excited to return to her home state of Connecticut for this production! Broadway: THE WIZ (Dorothy U/S), BAD CINDERELLA (Ensemble/Cinderella U/S) Tour: THE WIZ (Swing/Dorothy U/S) THE COLOR PURPLE (Celine). Regional: DREAMGIRLS (Lorrell), SMOKEY JOE'S CAFE (BJ), AIN'T MISBEHAVIN' (Armelia), RAGTIME (Sarah). Ithaca College BFA MT '19. Proudly repped by DGRW. For God, my family, friends and students. www.mariahlyttle.com



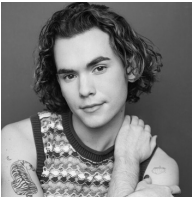
Sarah Kelly* (Jeanie) can't believe how lucky she is to be back performing with CSC. She was last seen here playing Beth in CSC's gorgeous production of Little Women. Graduate of Plymouth State University's MT program, Sarah is from Boston, and currently lives in NYC. Sarah worked on the Palace stage in NH. playing Elle Woods in Legally Blonde, Sandy in Grease, Dorothy in Wizard of Oz, and Beth in Little Women. Some other notables include Elle Woods in LB (Moonbox Productions) Heather Mac in Heathers (Priscilla Beach Theatre) Sophie in Mamma Mia (Norwood Theatre) Elle Woods in LB, Ariel in The Little Mermaid, Evelyn Nesbit in Ragtime (Company Theatre). Sarah thanks beautiful Lorah and Kate for having her back, and for truly inspiring her on this journey! Thank you's go out to her friends and her wonderful family. The love is endless!



Zion Middleton (Hud) is an interdisciplinary artist from McDonough, GA. A proud alumni of Elon University, Zion is indebted to his family, friends, and teachers who have supported him. National Tour[s]: Ain't Too Proud (Swing). Other Credits: A Strange Loop (Thought 6) and Jesus Christ Superstar (Caiaphas) Special thanks: HCKR, Mom, Gg, and Caleb. ig: @thezionmiddleton



Madeline Wong Perez (Crissy) is so excited to make her CSC debut and to revisit one of her most treasured roles. She earned her BFA in Musical Theatre at Texas State University in 2023. Madeline was most recently seen as a Mainstage Performer (Moana) with Disney Cruise Lines. She would like to thank Kate and Lora for this amazing opportunity, her wonderful team at Henderson Hogan, and as always, her friends and family for their endless support. www.madelinewongperez.com @luckymadz



Kaimana Neil (Woof) is thrilled to be working with Connecticut Stage Company! Recent credits: ACT's production of Kinky Boots, Tootsie National Tour, Le Cabaret Rouge on MSC Seashore, Chicago Shakespeare's Wizard of Oz, Porchlight Music Theatre's Sophisticated Ladies. A proud LINK and CCPA alumni. Kaimana sends out gratitude to his soul family and the Hell's Kitchen Agency! www.kaimananeil.com @woosh_kid



Chris Nicolosi (Margaret Mead) is thrilled to join the cast of CSC's Hair as Margaret Mead after playing the same role this past summer in Core Theatre Group's concert production in Warwick, NY. Other regional credits include Cabaret, High School Musical, 42nd Street, and Buddy: The Buddy Holly Story. Chris has also performed solo and cabaret material at several NYC venues including 54 Below and Club Cumming.



Berlin Lee Charles (Tribe) is excited to make his CSC debut in HAIR in his very own hometown! His recent credits include the South Korean International Tour of Sister Act the Musical, regional productions of Beautiful: The Carole King Musical in Michigan, Wisconsin and Missouri and Swan Lake Rock Opera Off-Broadway. Proud AMDA alum. Thank you, Lora! Berlin's music is available for streaming anywhere music plays! IG: @berberguccibear



Hannah Ellowitz (Tribe) is a New York-based actor excited to be making her CSC debut! Recent credits include Tzeitel in Fiddler on the Roof (Shenandoah Summer MT), Judy in Which Way To The Stage (Short North Stage), and Performer 1 in the original cast of Showcase: A Rehearsal Musical (NYC Workshop). Training: BFA in Music Theatre at Elon University, additional training at the London Academy of Music and Dramatic Arts. Endless love and gratitude to PMA, family, chosen family, and Nathan. @hannahellowitz



Ashley Sheping
203.767.3898
ashley@fort-interiors.com

Fairfield / Westchester
Litchfield Counties

fortinteriors



FESTA PROJECTS

HOME RENOVATION & CONSTRUCTION MANAGEMENT

FROM A SIMPLE HOME REFRESH TO GUT RENOVATIONS AND ADDITIONS
WE'RE HERE TO EASE YOU THROUGH YOUR CONSTRUCTION PROJECT WITH
COLLABORATION, TRANSPARENCY, AND COMMUNICATION.

LET'S CHAT ABOUT YOUR PROJECT TODAY!

EMILY FESTA, OWNER | EMILY@FESTAPROJECTS.COM | FESTAPROJECTS.COM

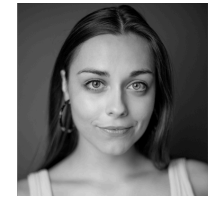
COMING UP NEXT AT CSC...



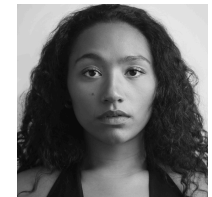
ABC THE LZ I X K
N 25 TH Q AN T CV
ME F AN N U A L H R
P U T N A M V I J S U
A B W C O U N T Y F
C S P E L L I N G Y U L
T R L A V N Z B E E Y

APRIL 5 & 6, 2025
NEW CANAAN LIBRARY

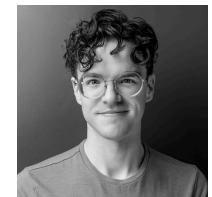
WWW.CONNECTICUTSTAGECOMPANY.ORG



Margot Grom (Tribe) is a Cincinnati native, currently residing in Brooklyn, New York. She's grateful to be making her CSC debut in HAIR! Recently: Carole King in BEAUTIFUL at the Pagosa Springs Center for the Arts. BFA Musical Theatre University of Michigan. Love to Pantera/Murphy, Mom, Dad, Ines, & Max!



Janaysia Gethers (Tribe) is so excited to be making her CSC debut! Hair holds a special place in her heart. Recent Credits, Regional: Beautiful: The Carole King Musical (Janelle Woods), The Gateway Playhouse; Little Shop of Horrors (Crystal, us Audrey), Sierra Repertory Theatre; Little Shop of Horrors (Urchins Swing), North Shore Music Theatre. Cruise Lines: Aladdin a Musical Spectacular (Jasmine), Disney Wish; The Little Mermaid (Ariel U/S), Disney Wish; Disney's Victrola Band (Lead Vocalist), Disney Wish. Instagram: Janaysia.Gethers



Noah Hartwell (Tribe) (He/Him) Off-Broadway: Medea - a Musical Comedy. NYC Readings: Grindr the Opera. Regional: Flint Repertory Theater, Moonlight Amphitheater. Gratitude to Connecticut Stage Company for this wonderful opportunity. For my husband, Cayel.



Leron Wellington (Tribe) is super excited to be performing at Connecticut Stage Company. Previous credits include Beautiful (Drifter) at Gateway Playhouse and Saugatuck CFA, Escape to Margaritaville (U/S Jamal), The Nick Jr Live! Tour (Swing) and Disney Cruise Line (Mainstage Vocalist). He would like to thank the cast and creative team, his family and friends, and his team at GBM.



Andy Saulitis (Hubert) began his thespian journey in a nameless part in "The Mulligan Magic Man" in 1963, when he was in the third grade. Fifteen years later he played Alexis Voinov in The Just Assassins (Les Justes) by Albert Camus. which had a (very) brief run at the University of Notre Dame in 1977.(and which no one but the cast attended). After a fairly long hiatus occasioned by a career in which he played a lawyer (using the Stanislavski Method and as his own doppelgänger), Andy returns to the footlights in Hair. Andy's journey continues with Hair, and then, hopefully, the Great White Way or, if not, the highway.



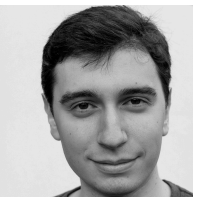
Matt Blank (Hubert) is thrilled to be working with CSC! Matt graduated from The New York Conservatory for Dramatic Arts: School of Film and Television. He has spent the last 16 years assistant directing and stage managing the musicals at Saxe Middle School. When not working around the stage, he is the School Resource Officer assigned to Saxe and is a member of the Connecticut Army National Guard. He is forever grateful for the unyielding support and inspiration from his amazing wife, Lauren, and two incredible boys, Jackson and Spencer: each one of them reminding him to let the sunshine in!



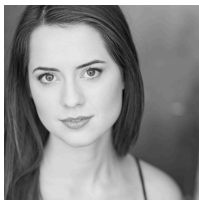
Lorah Haskins (Executive Producer) is thrilled to be bringing this story to life on stage with this unbelievable cast and creative team. Most recently seen as The Witch in CSC's inaugural production of Into the Woods, you can find her most often at The Studio for Performing Arts, which she has owned and run since 2011. She is honored to be working alongside her co-conspirator Kate Simone into CSC's second year as they continue to grow. Regional: Jesus Christ Superstar & Joseph (ACT), Urinetown, Into the Woods, Little Women, Oliver, Thoroughly Modern Millie, Candide, Evita, Sweeney Todd, Wild Party. Lorah is a proud Wisconsinite (go Badgers!), a photographer, and makes the world's best chocolate chip cookies. Thank you for supporting the arts in your community! www.LorahHaskins.com



Kate Simone (Director) previously directed Little Women & Into the Woods (CSC), Beauty & the Beast Jr. (STONC), Oklahoma! and The Music Man (NCHS) which won the Halo Award for best classical musical in 2023. Prior to directing, Kate performed in musicals around the country at places such as The Muny and Sacramento Music Circus. She won the CT Critics' Circle Award for playing Louise in Gypsy at Music Theatre of CT. She also appeared on TV in Mistresses (ABC) and HAPPish (Showtime). BFA from Syracuse University. She lives in New Canaan with her family and is the co-founder of CSC. Many thanks to her husband Rob, her kids Rob, Claire & Charlie, and to everyone who supports CSC and the arts at large!



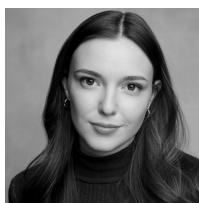
Ari Goldbloom-Helzner (Music Director) is a NYC-based music director, pianist, and voice teacher. Recent credits in Connecticut include: Little Women & Into the Woods (Music Director) at Connecticut Stage Company and Beauty & the Beast (Associate MD/Keys 2), Once On This Island (Associate MD/Keys/Conductor), the Wizard of Oz (MD/Arranger) at the Summer Theatre of New Canaan. Other credits: We Live in Cairo (Associate MD/Sub Piano-Conductor) at New York Theater Workshop, BC/EFA: Broadway Backwards/Easter Bonnet (Rehearsal Pianist/Music Assistant), Private Jones (Music Assistant) at Signature Theatre, Mad Hatter (Copyist) at the Herberger Arts Center, Beauty & the Beast (Associate MD/Keys 2) at the Engeman Theatre, and Beautiful (Associate MD/Keys 2) at the Gateway Theater. He also enjoys working as a staff accompanist and vocal coach at Pace University. He is a proud graduate of Brown University where he studied music and math.



Cassie Austin (Choreographer) Recently returned from Edinburgh Fringe with Barbara and Kenneth (Choreographer/Assoc. Director). Performance credits include The First National Tour of Hello, Dolly! (Irene u/s) with powerhouse divas Betty Buckley and Carolee Carmello, A Sign of the Times (Cindy u/s) at New World Stages. Regional credits: Connecticut Stage Company, The MUNY, MTWichita, Tuacahn, The Gateway. In 2023 she debuted her solo show, "cASS FIRST" to a sold out audience at Chelsea Table + Stage. Cassie is a multi-hyphenate teaching artist, choreographer, performer and writer. BFA Musical Theatre, BYU. Sending love to this incredible cast and her favorite up-and-coming theatre company: CSC! www.cassieaustin.com @classyaustin_



Jordan E. Moore* (Stage Manager) CSC Debut! Favorite regional credits include: Coriolanus (Portland Center Stage), 2 years of A Christmas Carol and Letters from Home (Merrimack Repertory Theatre), Rent and Coriolanus (Oregon Shakespeare Festival), Hysterical!, Athena, and The Suburbs (Thrown Stone Theatre Company) and It's A Wonderful Life: A Live Radio Play (Pasadena Playhouse). She was also the Production Coordinator for Oregon Shakespeare Festival's digital production of The Cymbeline Project on Episodes 5 through 10. She has done various work at theaters such as NewYorkRep, Boston Court Pasadena, Musical Theatre West, the Old Globe, and the John F. Kennedy Center. Proud AEA Member. MFA: CalArts. www.jordanemoore.com



Sadie Seelert (Creative Associate) is delighted to return to CSC on the creative team after playing Little Red in their premiere production of Into The Woods last season! Sadie works alongside Marc Tumminelli at Broadway Workshop, where she has associate directed Urinetown, Head Over Heels and this past summer Co-Directed the pilot production of Between the Lines Jr. She is grateful to teach at the Studio and sends thanks to Lorah and Kate for bringing more theatre to our town! Love to family and the company of Hair. @sadieseel

Special Thanks

New Canaan Library Staff

Nathalie Schubert

New Canaanite

New Canaan Newcomers

Allison Zinczenko & Ellen Crovatto

CSC Volunteers

NCL Volunteers

And not Nick Rehberger

NEW YORK CITY

RIDGEFIELD



MAKEUP ARTIST • ESTHETICIAN
BRIDAL SPECIALIST • COSMETIC EDUCATOR

AmandaGabbardBeauty.com • 646-269-4063 • @amandasgabbard



KARL
CHEVROLET
New Canaan, CT